

> XRF410N™



Out-of-the-box Solutions  
for Material Handling



**DATALOGIC**  
THE VISION IS YOURS

# TECHNICAL DATA

Ord. No.	Model Description	1D Code Resolution mm (mils)	FOV mm (inches)	DOF mm (inches)	Max Speed m/s (fpm)	BASE PERF	HIGH PERF	PACK TRACK	MASTER	EXTENS	SPARE UNIT
937400028	XRF410N-B00 2HD_MED RES_MASTER	0.38 (15)	590 (23.2)	400 (15.7)	1.2 (236)	x			x		
937400029	XRF410N-B10 2HD_HI RES_MASTER	0.33 (13)	470 (18.5)	400 (15.7)	1.0 (194)	x			x		
937400030	XRF410N-H00 2HD_HI PERF_MED RES_MASTER	0.38 (15)	590 (23.2)	400 (15.7)	2.2 (433)		x	x	x		
937400031	XRF410N-H10 2HD_HI PERF_HI RES_MASTER	0.33 (13)	470 (18.5)	400 (15.7)	1.8 (354)		x	x	x		
937400032	XRF410N-H20 2HD_HI PERF_VHI RES_MASTER	0.25 (10)	395 (15.5)	250 (10.0)	1.5 (295)		x	x	x		
937400033	XRF410N-B01 2HD_MED RES_EXTENSION	0.38 (15)	590 (23.2)	400 (15.7)	1.2 (236)	x				x	
937400034	XRF410N-B11 2HD_HI RES_EXTENSION	0.33 (13)	470 (18.5)	400 (15.7)	1.0 (194)	x				x	
937400035	XRF410N-H01 2HD_HI PERF_MED RES_EXTENS	0.38 (15)	590 (23.2)	400 (15.7)	2.2 (433)		x	x		x	
937400036	XRF410N-H11 2HD_HI PERF_HI RES_EXTENS	0.33 (13)	470 (18.5)	400 (15.7)	1.8 (354)		x	x		x	
937400037	XRF410N-H21 2HD_HI PERF_VHI RES_EXTENS	0.25 (10)	395 (15.5)	250 (10.0)	1.5 (295)		x	x		x	
937400038	MATRIX 410N XRF-B0x SPARE UNIT-REPLMNT	Single Reader - Spare part for replacement				x			x	x	x
937400039	MATRIX 410N XRF-B1x SPARE UNIT-REPLMNT					x			x	x	x
937400040	MATRIX 410N XRF-H0x SPARE UNIT-REPLMNT						x		x	x	x
937400041	MATRIX 410N XRF-H1x SPARE UNIT-REPLMNT						x		x	x	x
937400042	MATRIX 410N XRF-H2x SPARE UNIT-REPLMNT						x		x	x	x
93ACC0116	EMK-MTX-600 EXT.MIRROR XRF410N - 600MM	Deflection Mirror									
93A050048	CBL-1480-0.3 M12/5P MALE/FEM. 0.3M IDNET	CBX to XRF410N™ Master Unit or Master unit to Extension unit									
93A050049	CBL-1480-01 M12/5P MALE/FEMALE 1M IDNET										
93A050050	CBL-1480-02 M12/5P MALE/FEMALE 2M IDNET										
93A050051	CBL-1480-05 M12/5P MALE/FEMALE 5M IDNET										
93A050037	CAB-LP-05 LIGHTING POWER 5M										
93A050058	CAB-DS01-S M12-IP67 TO CBX 1M	CBX Connection Box to XRF410N™ Master Unit									
93A050059	CAB-DS03-S M12-IP67 TO CBX 3M										
93A050060	CAB-DS05-S M12-IP67 TO CBX 5M										
93A301068	CBX500 CONNECTION BOX MODULAR	Modular Connection box									
93ACC1853	BA400 M12 3P M. PANEL CONN. (EXT.POWER)										
93ACC1855	BA600 M12 5P F. PANEL CONN. (ID-NET OUT)										
93ACC1808	BM100 BACKUP MODULE	Optional configuration. Back up and Embedded Display modelus									
93ACC1809	BM150 DISPLAY MODULE										
93A051346	CAB-ETH-M01 M12-IP67 ETHERNET CABLE (1M)	Ethernet Cables M12 IP67 to RJ45									
93A051347	CAB-ETH-M03 M12-IP67 ETHERNET CABLE (3M)										
93A051348	CAB-ETH-M05 M12-IP67 ETHERNET CABLE (5M)										



# OUT-OF-THE-BOX SOLUTIONS FOR THE LOGISTICS INDUSTRY

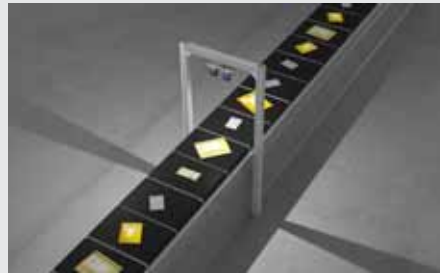
## XRF410N™: EXTENDED READING FIELD

The XRF410N™, named for its eXtended Reading Field, is a solution based on the new Matrix 410N platform for material handling and sortation in the logistics industry.

XRF410N™ is designed and built for a broad variety of material handling applications with transportation speeds up to 2.2 m/s (433 fpm) for medium sized objects, with typical scanning depths of 400 mm (15.7 in.).

The XRF410N™ is a perfect solution for e-commerce small object automated order fulfilment systems or postal logistics flats sortation applications.

## APPLICATIONS



### E-Commerce

XRF410N™ is the perfect solution for ECommerce, with a reconfigured retail code EAN/UPC 0.25 mm (10 mil) resolution, a small cell gap with 2D PackTrack software and code reconstruction for polybags.

### General material handling with reusable totes

XRF410N™ is optimal for reusable totes identification over handling systems. It can handle complex operations including scanning the objects inside the totes, are simplified by the XRF410N™'s large, real time Depth of Field (DOF).

### End of line

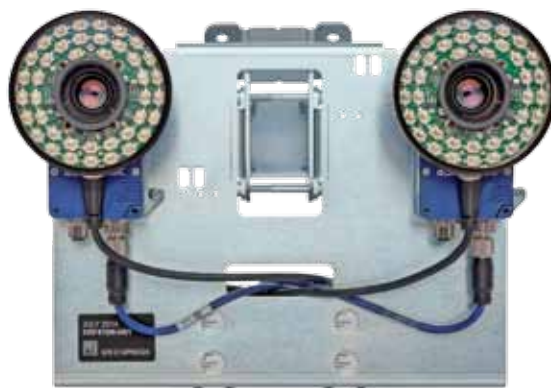
XRF410N™ is designed to fit medium speed material handling, such as manufacturing end of line, with a price level equivalent to entry level scanning technologies.

### Postal sorting

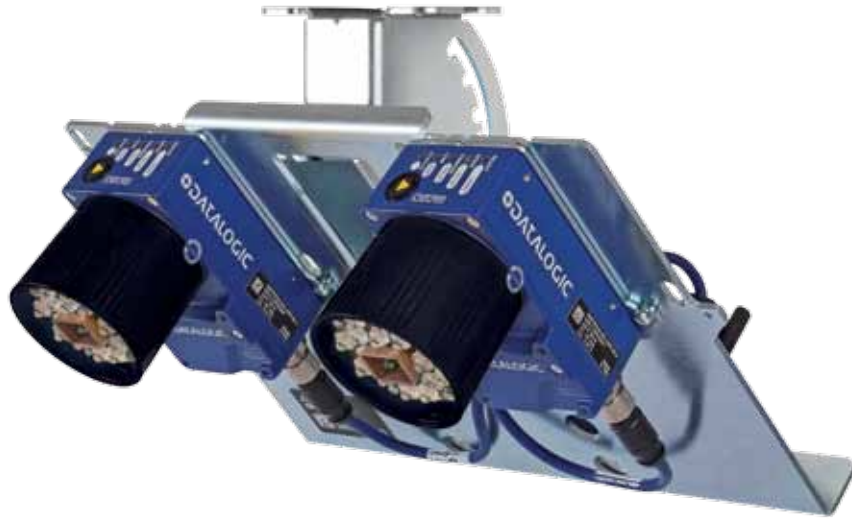
XRF410N™ is optimal for top reading of flyers, letters and small parcels typical in the postal environment.

### Medium object sortation for couriers

XRF410N™ is a perfect fit for medium size conveyors in logistics productions. For instance, a single XRF410N™ covers a 600 mm conveyor with, with a DOF of 400 at 2.2 m/s.



# TWO OUT-OF-THE-BOX MODELS



## XRF410N™ BASE MODEL

The XRF410N™ Base Performance model is a solution for medium speed material handling applications

- Speed: Up to 1.2 m/s (236 fpm)
- Object Spacing: Minimum of 200 mm (7.9 inches)
- Cost-effective
- Ideal for medium-width conveyors and end-of-line applications



## XRF410N™ HIGH PERFORMANCE MODEL

The XRF410N™ High Performance model is a dynamic solution for demanding, high speed applications.

- Speed: Up to 2.2 m/s (433 fpm)
- With 2MP sensor at 45 fps (images captured in a second)
- 2D PackTrack to handle applications with minimal gaps between objects

# FEATURES & BENEFITS

## EASY TO USE

Reduce installation time and eliminate errors with the XRF410N™, an innovative, image-based solution for material handling applications.

With a simple and fast ordering system, selecting the correct model for a specific application does not require technical analysis.

Additionally, XRF410N™ saves time and eliminates errors that occur during the Bill of Materials process.

Additionally, XRF410N™ allows for the immediate replacement of units with a hot-swapping feature and the availability of units for any model type.

Ord. No.	Model Description	1D Code Resolution mm (mils)	DOF mm (inches)	Max Speed m/s (fpm)
937400028	XRF410N-B00 2HD_MED RES_MASTER	0.38 (15)	400 (15.7)	1.2 (236)
937400029	XRF410N-B10 2HD_HI RES_MASTER	0.33 (13)	400 (15.7)	1.0 (194)
937400030	XRF410N-H00 2HD_HI PERF_MED RES_MASTER	0.38 (15)	400 (15.7)	2.2 (433)
937400031	XRF410N-H10 2HD_HI PERF_HI RES_MASTER	0.33 (13)	400 (15.7)	1.8 (354)
937400032	XRF410N-H20 2HD_HI PERF_VHI RES_MASTER	0.25 (10)	250 (10)	1.5 (295)
937400033	XRF410N-B01 2HD_MED RES_EXTENSION	0.38 (15)	400 (15.7)	1.2 (236)
937400034	XRF410N-B11 2HD_HI RES_EXTENSION	0.33 (13)	400 (15.7)	1.0 (194)
937400035	XRF410N-H01 2HD_HI PERF_MED RES_EXTENS	0.38 (15)	400 (15.7)	2.2 (433)
937400036	XRF410N-H11 2HD_HI PERF_HI RES_EXTENS	0.33 (13)	400 (15.7)	1.8 (354)
937400037	XRF410N-H21 2HD_HI PERF_VHI RES_EXTENS	0.25 (10)	250 (10)	1.5 (295)



## EFFICIENT INSTALLATION

The XRF410N™ is a fully functional, Matrix solution that is pre-assembled and configured at the factory, resulting in easy, fast installation on-site.



Step 1. Install the bracket



Step 2. Mount the assembly



Step 3. Connect the trigger



Step 4. Power system up

# FEATURES & BENEFITS

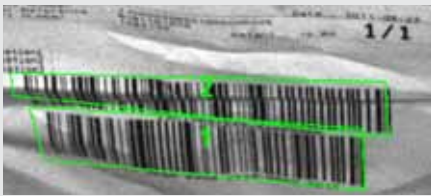
## MODULAR

With a modular design, multiple XRF410N™ solutions can be combined for applications with wide conveyor belts or multi-side reading.

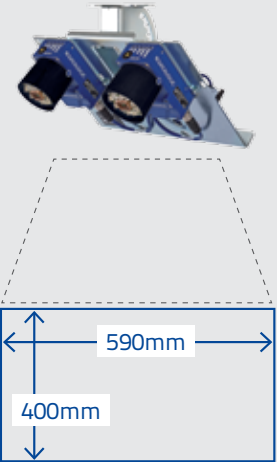
Additionally, a CBX500 with a display and back up module can be added, providing automatic parameter restoration for a replacement unit (factory or spare).



## INTRINSIC DEPTH OF FIELD



1D barcode  
0.38 mm



The XRF410N™ has a 400 mm, intrinsic DOF superior to anything available on the market today. The DOF eliminates focusing complexity and is ideal for irregular-shaped objects, offering:

- A simple installation process over any conveyor type, even those with severe mechanical constraints
- No height barriers
- DOF is provided real-time with no latencies
- No moving parts

## FLEXIBILITY FOR TIGHT SPACES

The EMK-MTX-600 External Mirror allows the XRF410N™ to be installed into tight spaces, with no need to alter the infrastructure of a pre-existing automation system.

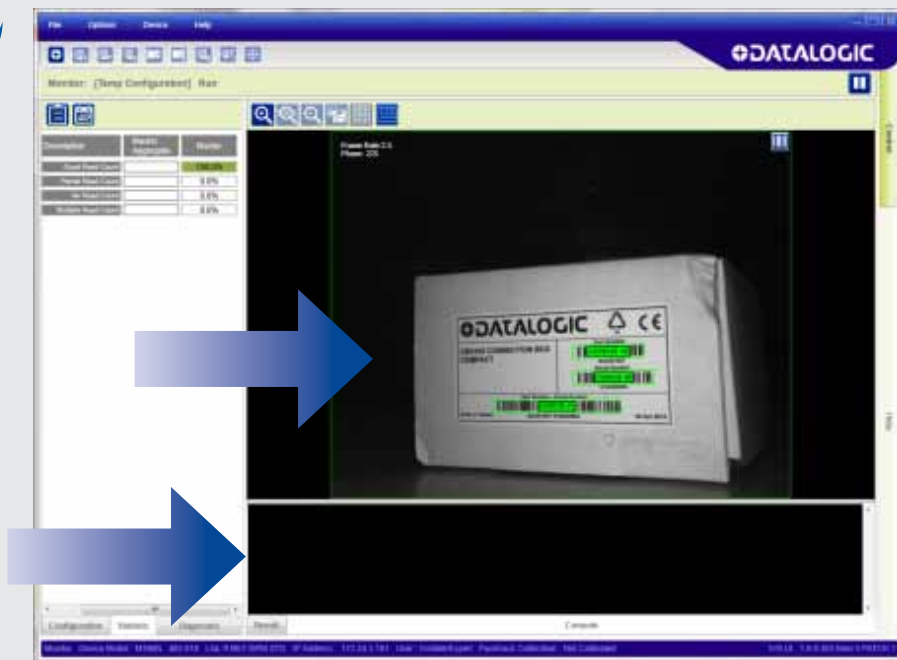


# POWERED BY INDUSTRY-LEADING SOFTWARE

## DL.CODE

The XRF410N™ is powered by industry-leading, state-of-the-art DL.CODE software. The new DL.CODE offers a usable interface that is:

- EASY: Intuitive graphical user interface with features like smart parameter display, linked parameter help information, and graphical code setups, anyone can program the Matrix N imagers
- FAST: Quickly and accurately configure devices using drag and drop message formatting, parameter display optimization, and immediate visual feedback on parameter changes.
- HIGH PERFORMING: Maximize the speed and performance of Matrix N devices with automated auto learn, independent code optimizations, and part variance effects.
- REAL-TIME: Increase uptime through a real time view of the process while the Matrix N is still working in the production line. Instantly diagnose process issues for faster, more accurate problem resolution



## 2D PACKTRACK

The High Performance model offers 2D PackTrack for applications that require small gaps between objects, such as tray sorters.

2D PackTrack provides:

- Multiple reading rate for maximum code acquisitions
- Immunity to reflective or damaged codes
- Installation flexibility with object tracking and a programmable TX line



## HEADQUARTERS

### Datalogic Automation Srl

Via Lavino, 265  
40050 Monte San Pietro - Bologna - Italy  
Tel. +39 051/6765611  
Fax +39 051/6759324  
info.automation.it@datalogic.com

## BRANCHES AND SALES OFFICES

### EUROPE BENELUX

#### Datalogic Automation Benelux

Newtonweg 3  
4104 BK Culemborg  
The Netherlands  
Tel. +31 345/589489  
Fax +31 345/511419  
info.automation.nl@datalogic.com

### FRANCE

#### Datalogic Automation Srl

Succursale en France  
Le Parc Technologique de Lyon  
333 cours du 3ème Millénaire - Le Pôle  
69800 Saint Priest  
Tél. +33 (0)4/72476180  
Fax +33 (0)4/72470721  
info.automation.fr@datalogic.com

### GERMANY

#### Datalogic Automation Srl

Niederlassung Central Europe  
Gottlieb-Stoll-Straße 1,  
73271 Holzmaden  
Tel. +49 7023 7453-100  
Fax +49 7023 7453-129  
info.automation.de@datalogic.com

### ITALY

#### Datalogic Automation Srl

Via Lavino, 265  
40050 Monte San Pietro - Bologna  
Tel. +39 051/6765611  
Fax +39 051/6759324  
info.automation.it@datalogic.com

#### Datalogic Automation Srl

##### LASER MARKING

Via Le Gorrey, 10  
11020, Donnas - Aosta  
Tel. +39-0125-8128201  
Fax +39-0125-8128401  
info.automation.it@datalogic.com

Via Dell'Industria 15, 21018  
Sesto Calende - Varese  
Tel. +39-03319180601  
Fax +39-03319180801  
info.automation.it@datalogic.com

### SPAIN

#### Datalogic Automation Iberia

Sucursal en España  
C/Samontà, 21 Planta baja, Local 0  
08970 Sant Joan Despí - Barcelona  
Tel. +34 (0)93/4772059  
Fax +34 (0)93/477272  
info.automation.es@datalogic.com

### NORDIC

#### Datalogic Automation AB

Höjdrodergatan 21  
21239 Malmö - Sweden  
Tel. +46 (0)40/385000  
Fax +46 (0)40/385001  
info.automation.se@datalogic.com

### UNITED KINGDOM

#### Datalogic Automation UK

Datalogic House  
Dunstable Road, Redbourn - Herfordshire  
AL3 7PR  
Tel. +44 (0) 1582 791750  
Fax +44 (0) 1582 791769  
info.automation.uk@datalogic.com

### TURKEY

#### Datalogic ADC Turkey

No:16 Neo Vista Sitesi C1 Blok D.7  
Gokturk/Kemerburgaz  
34077 - Istanbul, Turkey  
info.adc.tr@datalogic.com

## NORTH AMERICA

#### Datalogic Automation Inc

511 School House Road  
Telford, PA 18969-1196 - United States  
Tel. +1-800-BAR-CODE or +1-215-723-0981  
Fax +1-215-721-5551  
info.automation.us@datalogic.com

#### Datalogic Automation Inc

##### MACHINE VISION

5775 W Old Shakopee Rd  
STE 160, Bloomington, MN 55437 United States  
Tel. +1-952-996-9500  
Fax +1-952-996-9501  
info.automation.us@datalogic.com

## SOUTH AMERICA

#### Datalogic Brazil

Avenida Olivio Roncoletta, 465  
Bairro Vila Hortolandia Jundiaí (SP), Brazil  
Tel. +55 11 29232600  
orders.ia.int@datalogic.com

## APAC

### AUSTRALIA-NEW ZEALAND

#### Datalogic Automation Pty Ltd

Unit 130, 45 Gilby Road  
Mt Waverley - Victoria, 3149 - Australia  
Tel. +61 (0)3/95589299  
Fax: +61 (0)3/95589233  
info.automation.au@datalogic.com

### CHINA

#### Datalogic Automation Asia

Floor 20, Room 2017, Building 2,  
16 West Nan San Huan Road  
Fengtai District, Beijing  
Tel: +86 (0)21-5836 6692  
Fax: +86 (0)21-5836 6695  
info.automation.cn@datalogic.com

Suite 1301, Hua Rong Plaza,  
1289 South Pudong Road, Pudong District  
Shanghai 200120  
Tel: +86 (0)21-5836 6692  
Fax: +86 (0)21-5836 6695  
info.automation.cn@datalogic.com

Room 1104B, 5#Tower, Fantasta MIC Plaza,  
West Nanhai Road, Nanshan District,  
518054 Shenzhen, Guangdong, China  
Tel: +86 (0)755-8629 6779  
Fax: +86 (0)755-8628 1280  
info.automation.cn@datalogic.com

1202, Excellence Build, 128 Yanji Road,  
Shibei District, Qingdao, China  
Tel: +86 532 55787889  
Fax: +86 532 55787890

### JAPAN

#### Idec Datalogic Co. Ltd

10-40, Mikuni-Honmachi 1-Chome,  
Yodogawa-ku, Osaka 532 0005  
Tel. +81(6) 6398/3200  
Fax +81 (6) 6398/3202  
www.idljp.com

Rev. 00, 11/2014

Product and Company names and logos referenced may be either trademarks or registered trademarks of their respective companies. We reserve the right to make modifications and improvements.



www.datalogic.com